

Nutsche Filters

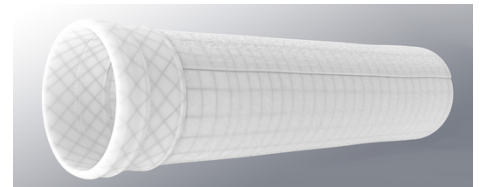
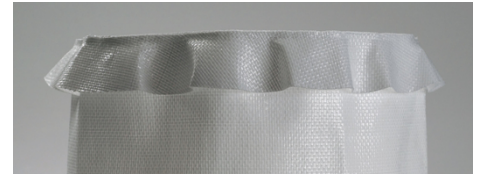
Sefar provides type-specific filter discs and bags for nutsche filters that meet the high standards of the pharmaceutical and chemical industry with regard to certification and traceability.

Product Features

Sefar filter solutions for Nutsche Filter

Pressure Nutsche Filters are simple and proven filtration systems for solid-liquid separation of medium-sized batches on various filter media.

In the pharmaceutical and chemical industries, pressure filters and single-layer filters are used in a large variety of forms.



DOWNLOADS

Brochure: Process Filtration (PDF 5300 kb)

Fabrication solutions

Sefar's filter discs are characterized by their precise fit and easy installation. The disc edges can be fabricated using laser cutting, hemmed or taped with reinforcement. In our wide range of filter materials (polypropylene, polyester, PEEK and PTFE fabric), we can supply you with the optimal solution for your application's chemical and thermal requirements. Special bag versions are available as customized solutions.

Unique marking



Customized bag version with flange

Sefar Pty Ltd
Filtration and Metal Mesh

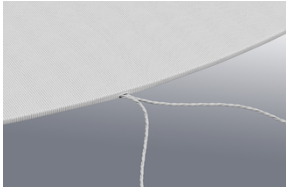
19-21 Huntingwood Drive
 Huntingwood NSW 2148
 Australia

Phone +61 2 8822 1700
 Fax +61 2 8822 1744

oceaniasales@sefar.com

[Go to product page](#)

Hemmed with cord



Sefar filter solutions for OEM

Our products meet the specific needs of these filtration applications and are successfully running all over the world on all known nutsche filter brands and OEMs, such as:

Comber

Heinkel

Mavag AG

Waldner

Bachiller

Delta

Filter media technology

Sefar's **Double Layer Weave** technology combines fine filter fabric together with a rugged backing cloth.

SEFAR **TETEX** DLW fabrics are produced in our European facilities to meet the

highest quality requirements and offer these decisive advantages:

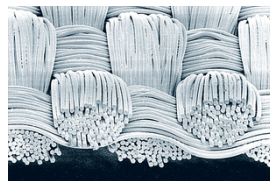
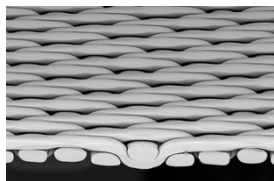
- Low downtime
- High product yield
- Ease of installation
- Excellent cake release
- Minimal product contamination

In addition to DLW fabrics, monofilament and multifilament fabrics are also available to ensure an optimal design.

Double-layer fabric

Monofilament fabric

Multifilament fabric



- With integrated backing cloth for excellent drainage and stability

- For maximum permeability and optimal cleaning properties

- For maximum particle retention, strength and cloth flexibility

Specially made for life science industries

Sefar controls every crucial production step from yarn production to the ready-to-use filters making possible a complete traceability of all critical parts.

Our unique market position in **life science** enables us to supply products to our customers that meet all required quality levels and compliances.

Sefar has perfected its manufacturing processes to meet the needs of the pharmaceutical industry. Our exclusive GMP compliant filter products are manufactured in our cleanroom following strict GMP guidelines.






- EC 1935/2004
- EU 10/2011
- GMP EC 2023/2006 or cGMP
- FDA CFR 177
- ISO 9001
- Single packaging
- Customized marking
- Traceability





CONTACT

-  Local contact
-  Contact form
-  Send mail

Please call us for further information:

Phone CH: +41 71 898 5700

Locations



**Sefar Pty Ltd
Filtration and Metal Mesh**

19-21 Huntingwood Drive
Huntingwood NSW 2148
Australia
Phone: +61 2 8822 1700
Fax: +61 2 8822 1744

 [E-Mail](#)



**Sefar Pty Ltd
Filtration and Metal Mesh**

Unit 4, 68 Callaway Street
Wangara WA 6065
Australia
Phone: +61 8 9303 2600
Fax: +61 8 6305 0930

 [E-Mail](#)

**Sefar Pty Ltd
Filtration and Metal Mesh**

19-21 Huntingwood Drive
Huntingwood NSW 2148
Australia

Phone +61 2 8822 1700
Fax +61 2 8822 1744

oceaniasales@sefar.com

[Go to product page](#)