

# Membrane Switches and Dials

Screen printing mesh for the electronic industry.

Perfect fabrics for new stencil standards in industrial environments and impressive print results.

## Overview

### Performance, innovation, reliability: Printing in the electronic industry

Membrane switches and dials for the automotive industry have two equally-important needs: precise color reproduction and excellent print-quality are crucial for success.

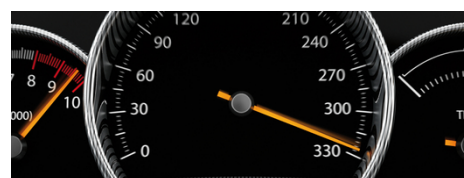
Most of the products are printed using a multiple image production process. Therefore low elongation screen printing mesh having superior dimensional stability is required.



© Danielson Europe BV

### Our offer. Your benefit:

- Technology and quality of the world's leading manufacturer
- Wide product range for all requirements from stock
- Innovative products providing maximum efficiency
- Individual support for your printing projects
- Lean, efficient production, in both stencil preparation and the printing process
- Sustainability, safety and reliability of supply to the finished printed product
- Local, world-wide cooperative partnerships with Sefar's support teams
- Increase the competitiveness of your business



## DOWNLOADS

SEFAR PME Leaflet (PDF 223 kb)

SEFAR PME Article list (PDF 645 kb)

SEFAR PME Product data sheet (PDF 344 kb)

SEFAT PET 1500 Leaflet (PDF 193 kb)

SEFAR PET 1500 Article list (PDF 879 kb)

SEFAR PET 1500 Product data sheet (PDF 238 kb)

## Sefar Pty Ltd Filtration and Metal Mesh

19-21 Huntingwood Drive  
Huntingwood NSW 2148  
Australia

Phone +61 2 8822 1700  
Fax +61 2 8822 1744

[oceaniasales@sefar.com](mailto:oceaniasales@sefar.com)

[Go to product page](#)

## Applications

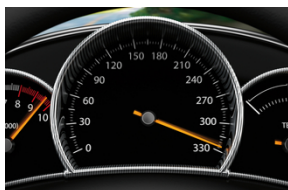
### Constantly under pressure – Membrane switches and keypads



- Functional layers
- Conductor paths
- Adhesive printing
- Communication interface

Keypads are in constant use every day, must withstand a lot of physical punishment and still look good and perform well. In addition, inscriptions such as signs, labels and numbers must remain clearly visible for years. For both graphical and functional elements: By using Sefar screen printing mesh you can produce membrane switches and keypads with the highest, consistent quality. Recommended: SEFAR PME and SEFAR PET 1500.

### Form follows function – Dials



- Solid color
- Translucent ink
- Metallic and fluorescent
- Adhesive
- Varnish

#### Sefar Pty Ltd Filtration and Metal Mesh

19-21 Huntingwood Drive  
Huntingwood NSW 2148  
Australia

Phone +61 2 8822 1700  
Fax +61 2 8822 1744

[oceaniasales@sefar.com](mailto:oceaniasales@sefar.com)

[Go to product page](#)

As motorists, our eyes are mainly focused on the road but we must also be constantly aware of our speed, and thus we also look often at our tachometer. SEFAR PME and SEFAR PET 1500 screen printing mesh properties allow the precise and efficient production of easy-to-read tachometer dials so that we are able to keep our eyes on the road but easily and continuously be aware of our speed and remain accident free.

## Screen Printing Mesh

### SEFAR PME – The best performing screen printing mesh



SEFAR PME is the screen printing mesh for use in the industrial environment. It is based on an innovative, high modulus polyester yarn developed by Sefar having extraordinary tensile strength combined with very low and evenly-balanced elongation. SEFAR PME sets new standards in the stencil making process. Its quality printing results are hugely impressive in the most demanding and innovative printing applications.

### SEFAR PET 1500 – The screen printing mesh professionals use

SEFAR PET 1500 is the best stencil carrier for an almost infinite number of

#### Sefar Pty Ltd Filtration and Metal Mesh

19-21 Huntingwood Drive  
Huntingwood NSW 2148  
Australia

Phone +61 2 8822 1700  
Fax +61 2 8822 1744

[oceaniasales@sefar.com](mailto:oceaniasales@sefar.com)

[Go to product page](#)



screen printing applications – the most wanted for decoration of any printable substrate. SEFAR PET 1500 is available in the largest range of different screen printing mesh types.

## Locations



### **Sefar Pty Ltd** **Filtration and Metal Mesh**

19-21 Huntingwood Drive  
Huntingwood NSW 2148  
Australia  
Phone: +61 2 8822 1700  
Fax: +61 2 8822 1744

[E-Mail](#)



### **Sefar Pty Ltd** **Filtration and Metal Mesh**

Unit 4, 68 Callaway Street  
Wangara WA 6065  
Australia  
Phone: +61 8 9303 2600  
Fax: +61 8 6305 0930

[E-Mail](#)

### **Sefar Pty Ltd** **Filtration and Metal Mesh**

19-21 Huntingwood Drive  
Huntingwood NSW 2148  
Australia

Phone +61 2 8822 1700  
Fax +61 2 8822 1744

[oceaniasales@sefar.com](mailto:oceaniasales@sefar.com)

[Go to product page](#)